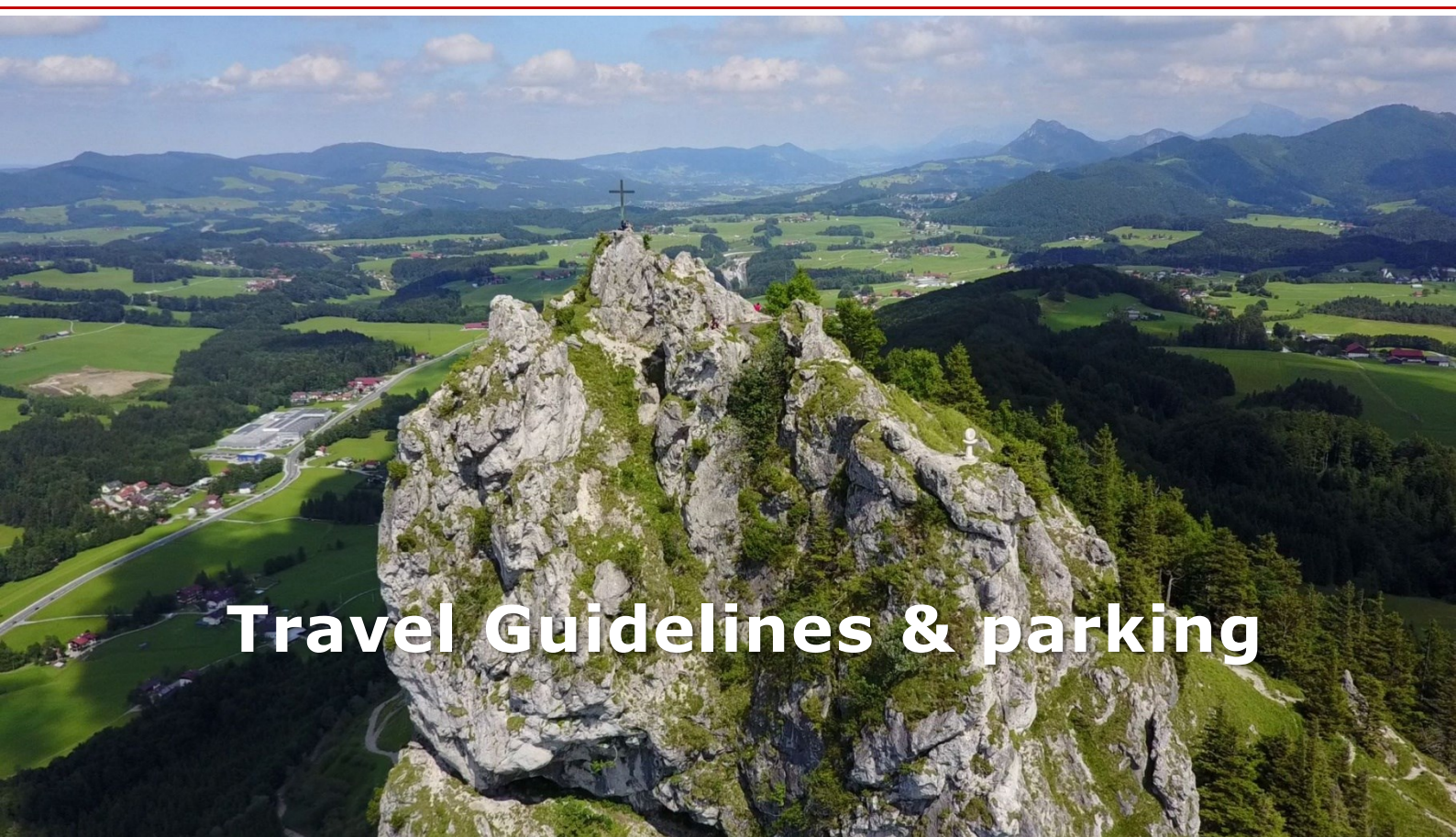




Nockstein Trophy



Travel Guidelines & parking

Cross Country Mountainbike Competition 2023

Union Mountainbike Club Koppl

Nockstein Arena | Schlagstraße 17 | 5321 Koppl | Austria

23.09.2023 | 07:30 –18:00

lat 47,821647 | lon 13,137736

> <https://www.nocksteintrophy.at> <

Version 27.05.2023



PREFACE

The Union Mountainbike Club Koppl has been welcoming its participants, spectators and sponsors to its mountain bike races since 1998. In 2023 we want to organize an unforgettable race weekend again. For the first time on Saturday, September 23rd, 2023 we will host a UCI race for juniors (part of the [Mountainbike Liga Austria](#)) and elite women/men ([UCI](#)) in addition to the [Austria Youngsters Cup](#) organized by the Austrian Cycling Association ([ÖRV](#)). In the evening, from 5:00 p.m., we'll have a party ([PDF](#)) including the (overall) award ceremony. The event takes place at the bike park near the technical assistance zone (TAZ). Keep the evening and night free and let us surprise you with what we have planned for our 25th anniversary! On Sunday, September 24th, 2023 we welcome our friends from the Bavarian Cycling Association ([BRV](#)) with the [Pözlcup](#) racing series and the Salzburg State Cycling Association ([LRV SBG](#)) with the [Junior Bike Cup Salzburg](#).

Further information should make your race preparations easier. These include information on **how to get here and the venue** ([PDF](#)) as well as recommendations for **accommodation** ([PDF](#)). The **program** of the event ([Saturday](#)) will then follow on site after the **bib number delivery** ([PDF](#)). The **Technical Guide** summarizes all the necessary information for [Saturday](#). The races in the individual race categories and **race tracks** ([Saturday](#)) can be followed via **live timing** ([Saturday](#)) on the Internet. The **results** are available online on [Saturday](#) immediately after verification by the responsible race steward. During the entire program we will provide you with food and drinks in the clubhouse ([PDF](#)). For those who want to stay a little longer on site before and/or after the race, shopping facilities and other information related to the race are also included in the FAQ ([PDF](#)).

As part of the sustainable use of environmental resources, it is important to us at the Union Mountainbike Club Koppl to subordinate the upcoming Nockstein Trophy to the main criteria of a "green event" as far as possible. In a modern understanding, sustainability includes the harmony of people, nature, and economy. To avoid mountains of rubbish and traffic avalanches, we (particularly spectators) refer to the use of environmentally friendly means of travel and the formation of carpools.

The Union Mountainbike Club Koppl, on behalf of the board and its entire team, wishes everyone good preparation and a stress-free journey, as well as an injury-free and successful race!



Hermann Klug
(Obmann)



Gerhard Wintersteller
(Kassier)

TABLE OF CONTENTS

PREFACE	2
TABLE OF CONTENTS	3
1 THE NOCKSTEIN ARENA	4
2 TRAVEL TO THE NOCKSTEIN ARENA	6
2.1 TRAVEL WITH PUBLIC TRANSPORT	6
2.1.1 <i>From Salzburg Airport to the train station</i>	6
2.1.2 <i>From the train station to Koppl</i>	6
2.2 TRAVEL BY TRAIN	7
2.2.1 <i>German Railways (Deutsche Bahn)</i>	7
2.2.2 <i>Austrian Railways (Österreichische Bahn)</i>	7
2.2.3 <i>Westbahn</i>	8
2.3 TRAVEL BY CAR.....	8
2.3.1 <i>From Vienna/Linz via the motorway to Koppl</i>	8
2.3.2 <i>From Munich/Innsbruck via motorway to Koppl</i>	9
2.3.3 <i>From Klagenfurt via motorway to Koppl</i>	10
2.4 SHUTTLE SERVICE.....	10
2.4.1 <i>Taxi</i>	10
2.4.2 <i>SMS</i>	11
2.5 TRAVEL BY PLANE	11
2.5.1 <i>From Salzburg airport</i>	11
2.5.2 <i>From Munich airport (MUC)</i>	11
2.5.3 <i>Vom Flughafen Wien (VIE)</i>	11
3 PARKPLÄTZE VOR ORT	12
4 SPONSORS	13

1 THE NOCKSTEIN ARENA

The Nockstein Arena is the training area of the local soccer club in Koppl and provides us the opportunity to use the clubhouse, sanitary environment and the parking places surrounding it (Figure 1). The Nockstein Arena (lat 47,821647 | 13,137736 lon) is located at the following address:

Schlagstraße 17
5321 Koppl
Austria



Figure 1: The Nockstein Arena

The event site shown in Figure 2 shows a map of the locations important to the race. The cleaning area for the bikes (bike wash) with three water jets (BW), changing room/shower/toilet in the basement or toilet also on the upper floor (orange), catering/canteen (green), start/finish (red), are marked. as well as the race office with registration and start number issue.

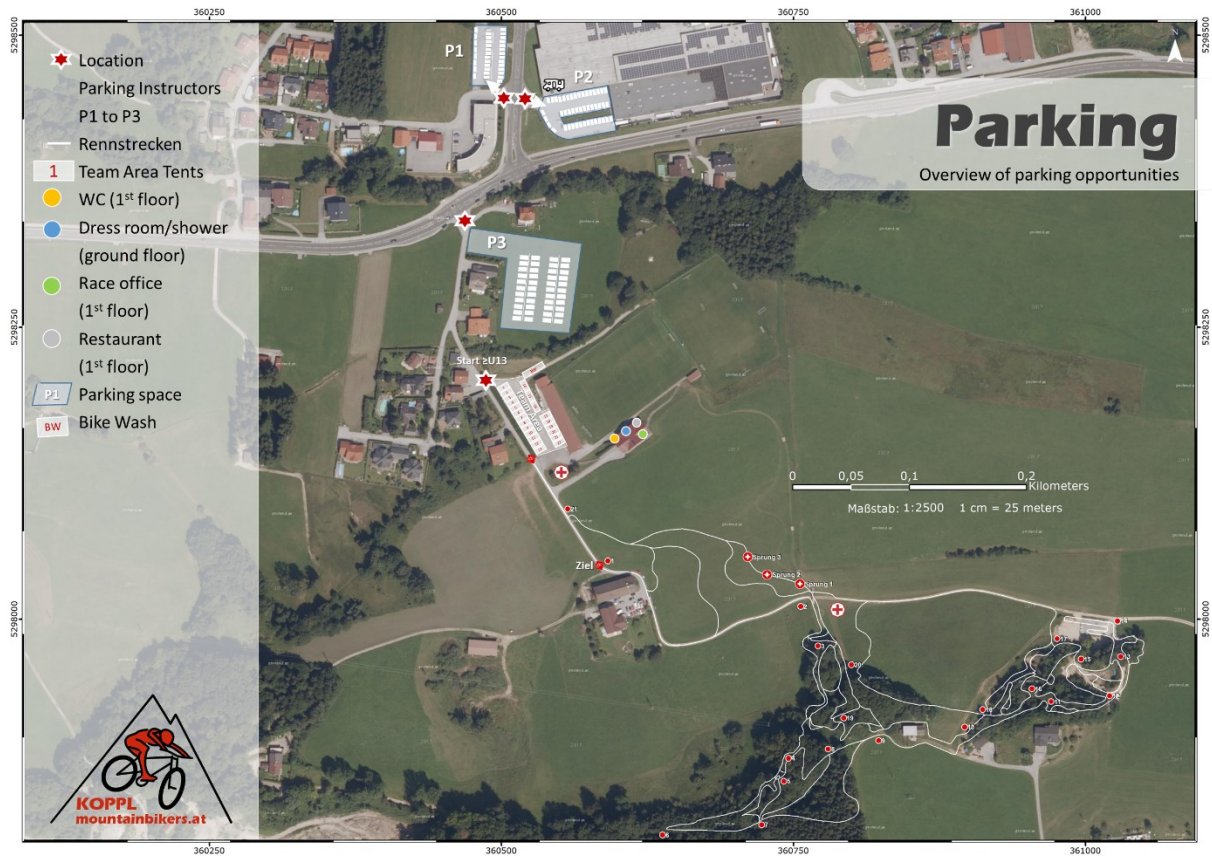


Figure 2: The event area

2 TRAVEL TO THE NOCKSTEIN ARENA

Although most athletes will travel by car, an optimal venue is characterized by good public transport connections for spectators.

2.1 TRAVEL WITH PUBLIC TRANSPORT

Guest coming from abroad, flight connections (see below) to Salzburg might be the most appropriate way. Within Salzburg, the local bus connects the airport with Salzburg train station. For the latter you can directly take a bus to the Nockstein Arena.

> <https://salzburg-verkehr.at/>

2.1.1 FROM SALZBURG AIRPORT TO THE TRAIN STATION

Take bus number 2 from Salzburg airport (directly after the main exit after the row of taxis) into the direction "Hauptbahnhof" (main station) (Figure 3).

2.1.2 FROM THE TRAIN STATION TO KOPPL

At Salzburg train station, take **Postbus 150** along the stations listed in Figure 4. The bus starts in front of the main station at track 5 (Figure 6) towards Bad Ischl (Salzburg - Hof - Fuschl - St. Gilgen - Strobl - Bad Ischl, Figure 5) and follows the route to the east of the city. Along the street "Wolfgangsee Bundesstraße", the bus directly stops at the venue (Koppl Abzweigung Schwaighofen).



Figure 3: From the airport to the train station

Salzburg Hauptbahnhof (main station)

- Kiesel
- Mirabellplatz
- Hofwirt
- Doblerweg
- Gnigl S-Bahn
- Salzburg Volksschule Gnigl
- Salzburg Kühberg
- Koppl Gruberfeldsiedlung
- Koppl Guggenthal
- Koppl Gniglerbauer

Koppl Abzweigung Schwaighofen

Figure 4: From the main station to Koppl

> [Postbus website](#)

> Bus schedule see [PDF](#)

> Fee: € 4,10 from train station

Figure 5: Bus 150 Salzburg - Koppl - Salzburg¹

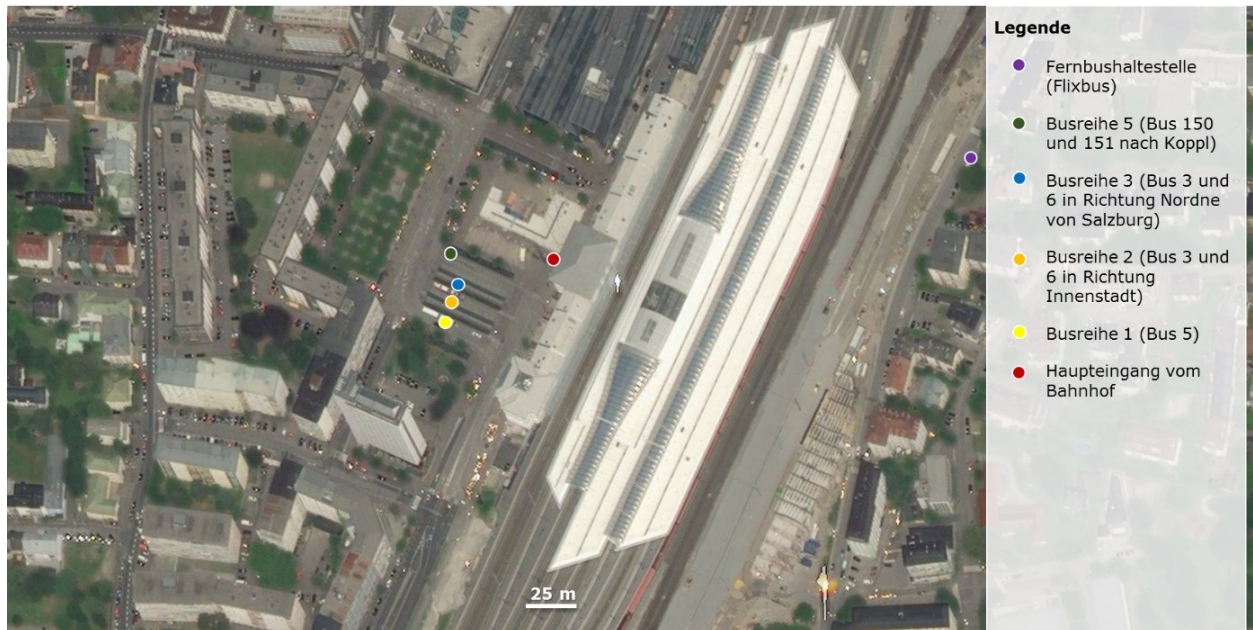


Figure 6: Bus tracks (Busreihe) in front of Salzburg train station

2.2 TRAVEL BY TRAIN

You can reach Salzburg by train from Innsbruck (in the west), Munich (in the north), Vienna/Linz (in the east) or Klagenfurt (in the south). The departure and arrival schedules according to [German Railways](#), [Austrian Railways](#), and [Westbahn](#) are located on the websites of each company.

2.2.1 GERMAN RAILWAYS (DEUTSCHE BAHN)

Deutsche Bahn can be reached via the website > <https://www.bahn.de>. From "München Flughafen Terminal 2" it takes about 2 to 2.5 hours with the S8 to change at "München Ost" and on to Salzburg. The cheapest single ticket starts at EUR 19.00 (super saver price) and EUR 50.00 (flexible price). At the weekend, the "Bayern Ticket" is available for EUR 27.00. This can be obtained at the counter or with the Deutsche Bahn app. Credit card payment or Paypal is possible.

2.2.2 AUSTRIAN RAILWAYS (ÖSTERREICHISCHE BUNDESBAHNEN)

From Vienna Airport or Vienna, it takes about 3 to 3.5 hours to Salzburg with the ÖBB Railjet > <https://www.oebb.at>. The single ticket ranges between EUR 20 (Sparschiene) and EUR 60 (normal price) and can be booked directly on the website.

¹ <https://salzburg-verkehr.at/downloads/regionalbus-150-salzburg-koppl-hof-fuschl-st-gilgen-strobl-bad-ischl/>

2.2.3 WESTBAHN

The Westbahn also runs as another provider from Vienna (only from the main station) to Salzburg. Attention: The ÖBB ticket is not valid on Westbahn trains. The Westbahn ticket can be obtained via the website > <https://www.westbahn.at>, the Westbahn app or directly on the train. Credit card payment is possible. The costs are between 14 EUR (western super price) and 53.00 EUR (western standard price).

2.3 TRAVEL BY CAR

Travelling on Austrian motorways require toll fees to be paid:

> <https://www.asfinag.at/maut-vignette/vignette/>

Since 2018, toll fees for a car can be acquired digitally at the following costs (incl. 20 % tax):

- Annual-Vignette: 96,40 EUR
- 2 Monthly-Vignette: 29,00 EUR
- 10 Days-Vignette: 9,90 EUR

Due to refugee migrations, passport checks have been setup at the German-Austrian borders. At the crossing Walserberg (A8) you might expect some delay entering Germany. Please ensure, you bring your passport with you!

2.3.1 FROM VIENNA/LINZ VIA THE MOTORWAY TO KOPPL

On motorway A1 Vienna to Salzburg drive until the exit Thalgau (Figure 7). Afterwards, follow the course of the road for 5,2 km into the direction Hof. At the end of the street, you pass along "Lagerhaus", a car selling company (VW, Audi), and a super market (ADEG). At the roundabout, take the first exit to the right, directing to Salzburg city. Follow this road another 5,5 km until the crossing to Schwaighofen. This crossing is marked by the company "Stemeseder" on the right hand side and a blue building of the company "Reiter Bau". At this crossing follow the mountainbike race signs to available parking spaces. The race will start to your left hand side. In case parking is already fully occupied there, please use the parking space at company Stemeseder. > [Download NocksteinTrophy_AnreiseWien.kmz](#)

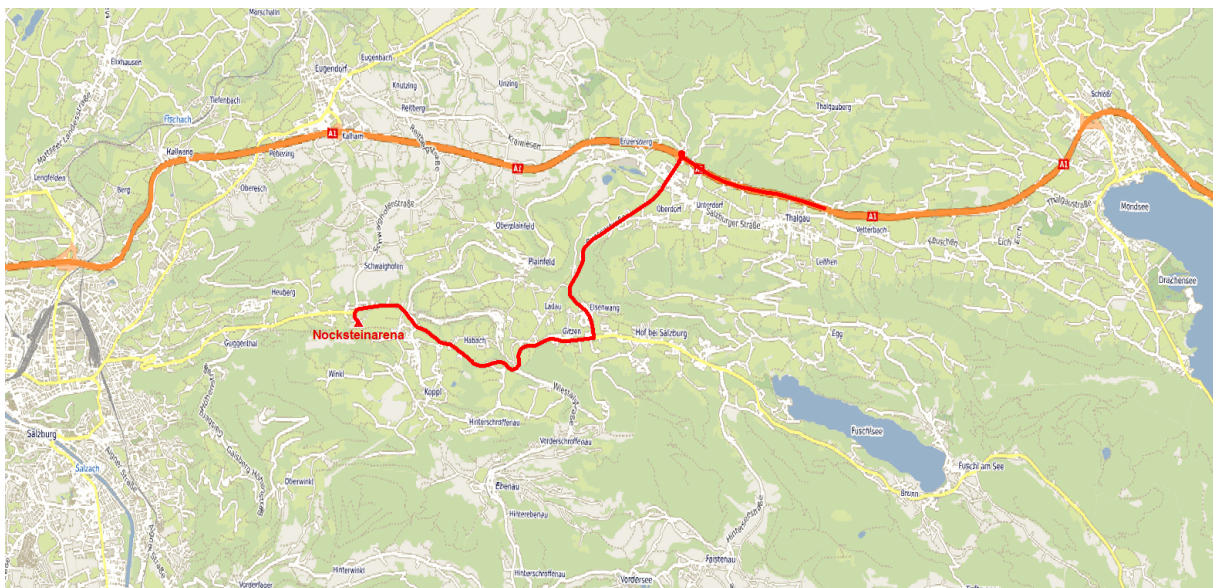


Figure 7: A1 Vienna/Linz - Koppl

2.3.2 FROM MUNICH/INNSBRUCK VIA MOTORWAY TO KOPPL

Coming from Munich you take the motorway A8 to Salzburg. After the exit Bad Reichenhall you continue driving on the motorway towards the border (Walserberg). Ensure you take motorway A1 directing to Vienna. Drive until the exit Thalgau (Figure 8). From here, follow the instructions when coming from Vienna. This is not the shortest way to the venue, but most likely the fastest and the one with less traffic jams.

> [Download NocksteinTrophy_AnreiseMuenchen.kmz](#)

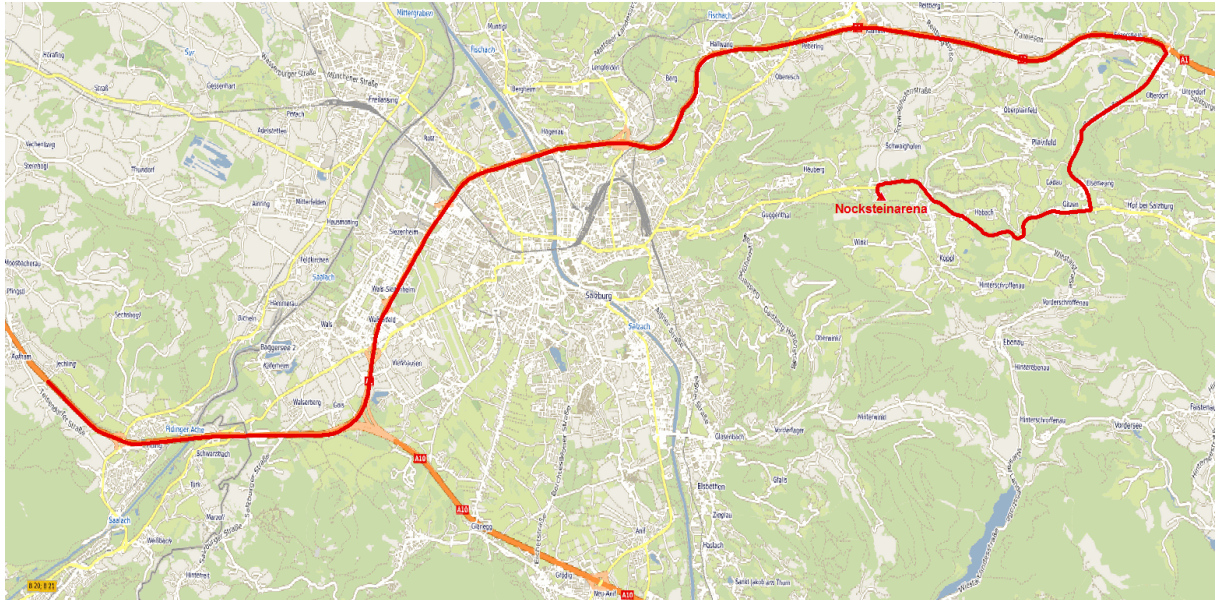


Figure 8: A8 / A1 München - Koppl

2.3.3 FROM KLAGENFURT VIA MOTORWAY TO KOPPL

The motorway A10 from the south is called "Tauernautobahn". Drive to Hallein and exit to Wiestalstausee (Figure 9). Follow the course of the road until the crossing Hof/Salzburg and turn left. From here, please follow the instructions when coming from Vienna and look out for advertisements of the Nockstein Trophy. > [Download NocksteinTrophy_AnreiseVillach.kmz](#)

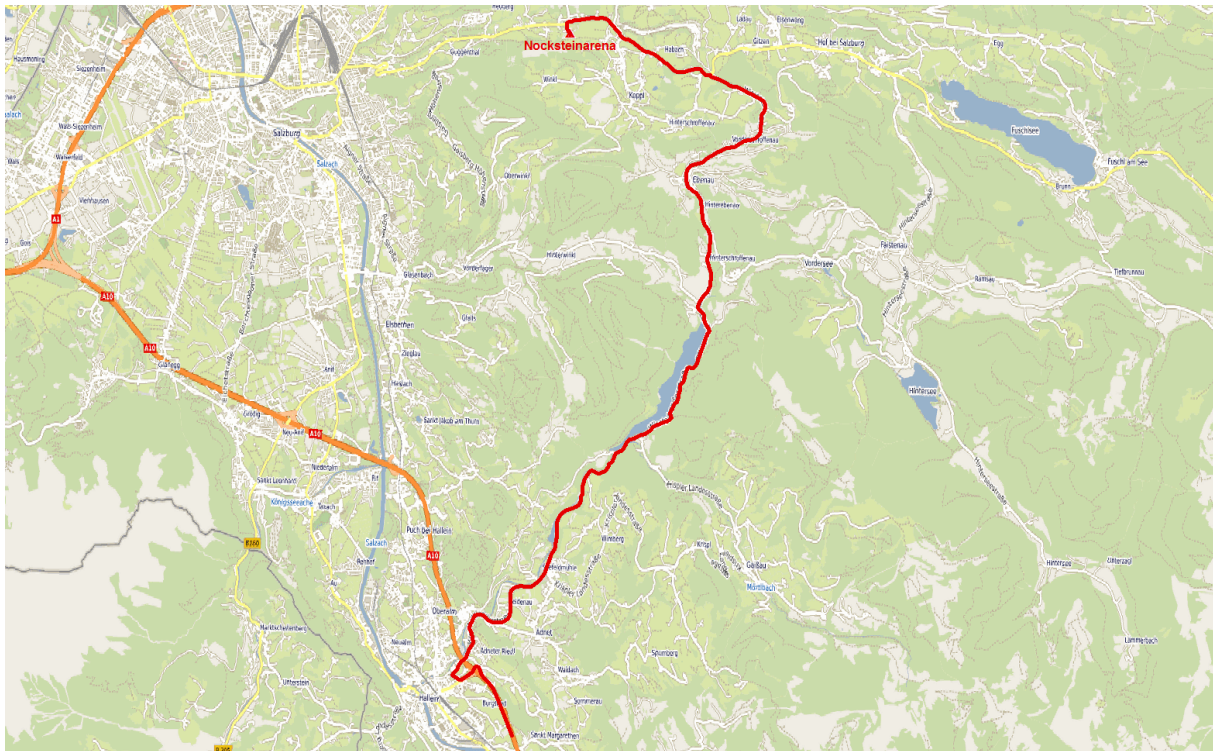


Figure 9: A10 Villach - Koppl

2.4 SHUTTLE SERVICE

2.4.1 TAXI

Plenty of taxis are available at the airport, the train station, and the inner city. You can call a taxi using the following numbers:

+43 662 8111 or
+43 662 2220.

Taxi costs from the airport and the train station are dependent on the time of the day and the day of the week. However, most likely you will pay around 25 to 35 EUR. In both cases, travel time will be around 20 minutes (dependent on traffic). Further information is available via:

- > <http://www.taxisalzburg.at> or
- > <http://www.taxi.at>.



2.4.2 SMS

The office of the airport shuttle service "Flughafentransfers" is open 24/7!

SMS Flughafentransfer

Walsersfeldstraße 15

5020 Salzburg, Austria

Email: sms@taxi.at

Web: <https://www.smsflughafentransfer.at/english/>

Tel: +43 662 8161

Fax: +43 662 436324

Ihr Flughafentransfer



Wir fahren - Sie fliegen!

2.5 TRAVEL BY PLANE

2.5.1 FROM SALZBURG AIRPORT

Salzburg Airport Wolfgang Amadeus Mozart is approximately four kilometres far away from the city centre. Many European connections are available from the airport. Dependent on the traffic (time of the day), it will take you about 15 minutes to the city centre 20 minutes to Koppl.

- > [Google Maps Link](#)
- > [Bing Link](#)
- > <https://www.salzburg-airport.com/de/>
- > <https://fahrplan.salzburg-verkehr.at/>
- > <https://salzburg-verkehr.at/>

2.5.2 FROM MUNICH AIRPORT (MUC)

Munich Airport is well connected to Salzburg train station. See the description about **Deutschen Bahn** above.

2.5.3 VOM FLUGHAFEN WIEN (VIE)

The quickest/easiest way to get to Salzburg from Vienna Airport is with the **ÖBB** (see above).

3 PARKING AT THE VENUE

The parking spaces offered are a maximum of 400 m from the event location. We have a gravel parking lot (car park 1, XYZ parking spaces) and an asphalt parking lot (parking lot 2, XYZ parking spaces) from the **Stemeseder** company. Both car parks border on the north of the "Wolfgangsee Bundesstraße" road. There is no electricity at either parking lot.

There are around 20 pitches for overnight campers on P2. A parking space measures around 10 x 5.5 meters and costs EUR 15.00 per night. The available parking spaces are numbered on site. The principle of the faster (first come - first serve) applies here. Upon arrival at the event site, the parking space must be paid for at the car park attendant or at the race office. In this context, a parking permit card with the number of the parking space will be issued. Please put this in the windshield. License plates and names are also noted. The data will be deleted after the event in accordance with **GDPR regulation**.

Furthermore, if the conditions are not too wet, meadows are also offered on the left side of the Wolfgangsee federal road in the direction of the clubhouse (P3). These cannot be used in rainy weather due to the ground conditions.

The former gravel parking lot in front of the soccer field is no longer usable. This space is available as a team area for setting up tents. Here the athletes can rest, warm up or have their bikes serviced.

There will be a briefing by the organizer's helpers. It is essential to follow the instructions!

4 SPONSORS

All personal engagement of the management board, the members of the club and other volunteers would not be as sufficient without the contribution of our sponsors. For a successful organisation of the Nockstein Trophy, we very much value all the material and financial support from many local companies! Without their support a satisfactory realisation of the Nockstein Trophy would not be possible. Thus, we would like to acknowledge their contribution and would like to thank them for their donation and trust as well as their excellent partnership!



Rinnerthaler Walter
Röcklbrunnstraße 2 | 5020 Salzburg
Tel.: 0662 / 882104 | www.riwa.at





PERRO



BERNIS
BIKESHOP



Wolgangstraße 32, 5322 Hof bei Salzburg
Tel.: +43(0)6229-2900, Fax: DW-4, land@fuchs-berger.at, www.fuchs-berger.at



Raiffeisenbank
Fuschlsee West

